



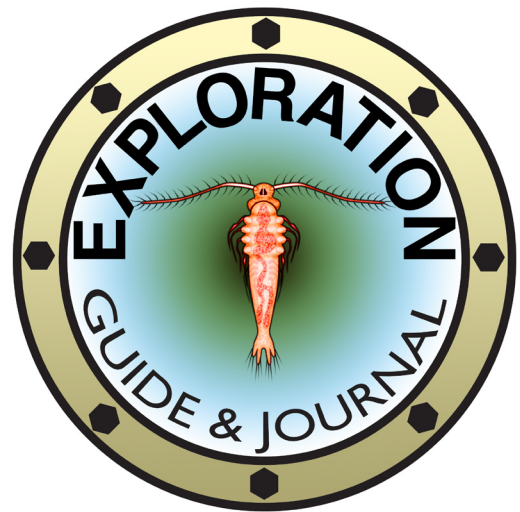
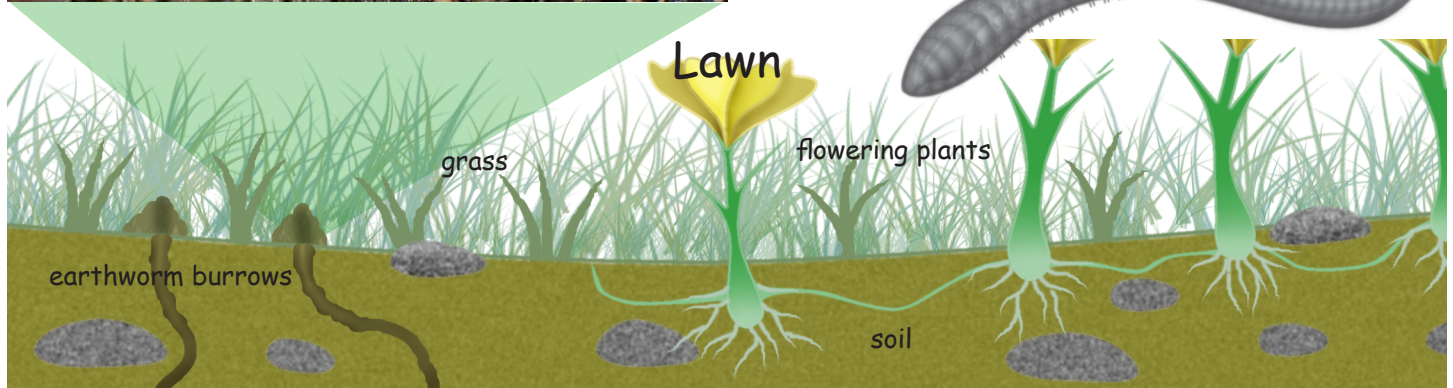
Accompanies Episode 12 of the 13-part video series

—Lair of the Earthworm—

Written by Eric R Russell & Bruce J Russell

In this episode...

When a subterranean monster swallows their rover the crew must pursue the beast into its volcano-like mound. Here, they unearth the culprit – an **earthworm**. Within the worm's sunless burrow, they unravel the basic plan of **annelid anatomy** and learn it is not radically different from many more advanced land dwelling animals. From these observations, the explorers develop theories about the role earthworms play in maintaining **terrestrial ecosystems**.



Backyard Ecology: Lawn Soil The Log of Captain Jonathan Adler

Day 18: 09:00 hours... It is with some embarrassment that I must report that we have misplaced our Terra Rover!

From the flyer we search the area where we believe we parked the rover - but, unlikely as this sounds, the terrain seems to have changed while we were exploring the garden ecosystem. Nothing is familiar! And most mysteriously, there are fresh mounds of new earth throughout the lawn.

To my relief Tara's keen eyes find our missing vehicle. Eager to reclaim it, we land on one of the new earthen mounds nearby. We are about to hike over to the rover when the soil beneath it suddenly pushes upward! What is happening? We stare helplessly as the earth opens under the rover and something swallows it whole! It is an animal - more specifically it is one of the most important animals of the terrestrial ecosystem... an earthworm!

With a bold pronouncement from Tara our next adventure begins..."Follow that worm!"

Flyer

Aerial auxiliary to MS Cyclops

Vehicle Dimensions

LENGTH	.65 mm
WINGSPAN	.75 mm

Vehicle Mission

Maximum speed	1 meter per minute
Mission duration	2 days

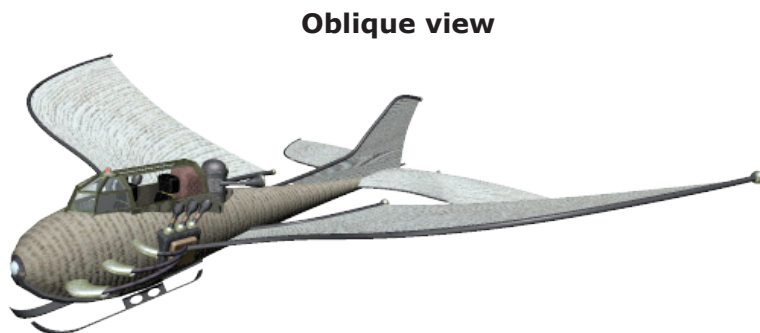
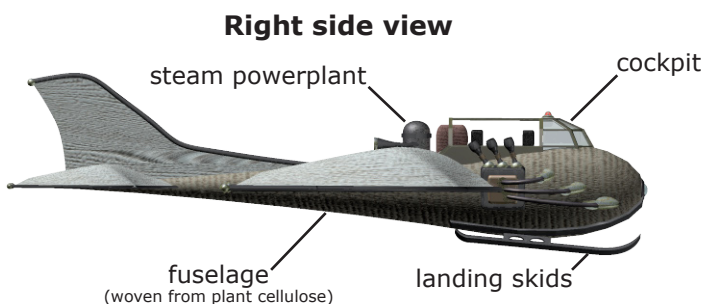
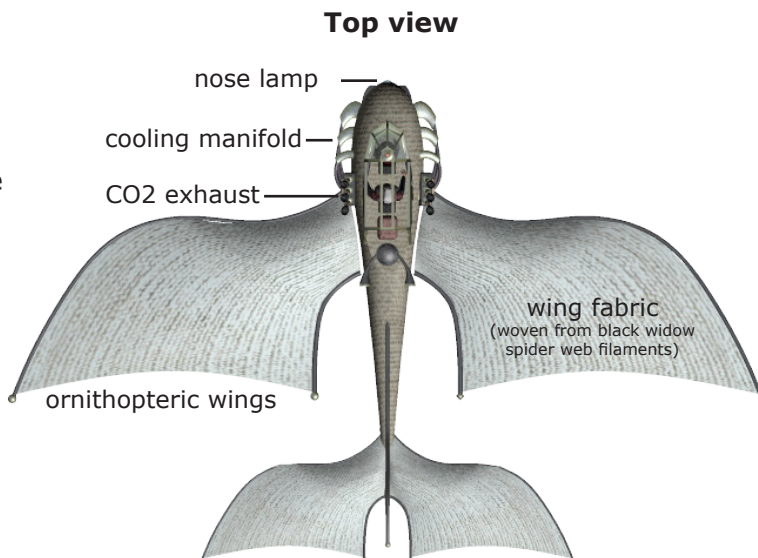
The *Flyer* is an ornithopter, a machine that maintains flight by emulating the wing-beat patterns of flight-capable animals such as insects, bats, and birds.

Launched from a base built in the molt of a dragonfly larva, a fleet of flyers patrol the pond surface and surrounding habitats, scouting probable exploration sites for the Micro Exploration Corps.

The flexible fabric of the Flyer's wings are made from a woven mesh of black widow spider web filaments. The fuselage is constructed from a basket-like weave of cellulose plant fibers.

Power is generated from an onboard steam powerplant that uses alcohol as fuel. The alcohol is produced by decomposer bacteria and is carried in small tanks aboard the flyer.

Requiring a single pilot, the Flyer can carry a second microscopic passenger for aerial explorations and reconnaissance.



Contents of this guide...

- Flyer page 2
- Terra Rover page 3
- About the Organisms page 4
- Key to Organisms page 5

Terra Rover

Terrestrial auxiliary to MS Cyclops

Vehicle Dimensions

LENGTH	.35 mm
BEAM	.22 mm

Vehicle Mission

Maximum speed	3 cm per minute
Mission duration	10 days

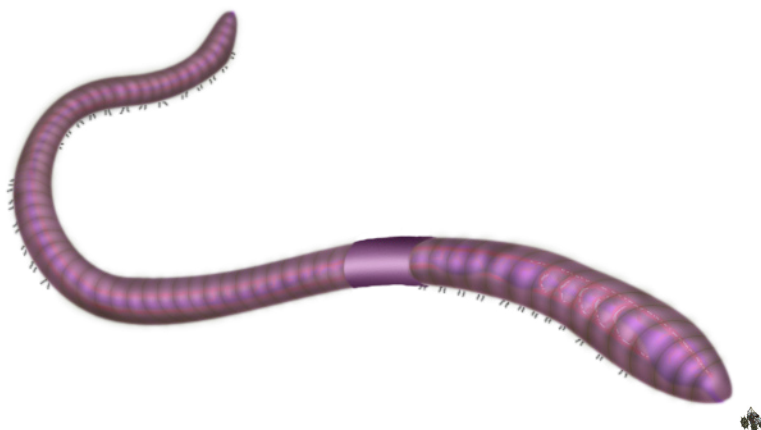
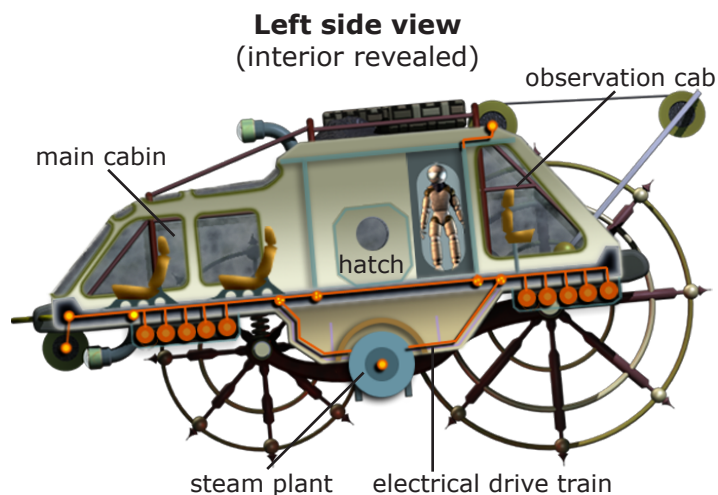
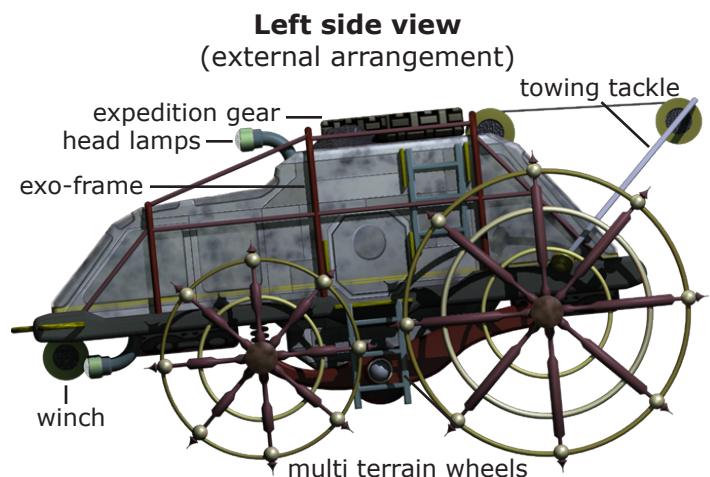
The *Terra Rover* is a durable vehicle designed for exploration of terrestrial surfaces with a minimum crew (2).

The rover's multi terrain wheels allow the vehicle to climb near-vertical surfaces of soil, wood, and soft plant tissue.

Power is generated from an onboard steam powerplant that uses alcohol as fuel. The alcohol is produced by decomposer bacteria aboard the *Cyclops* and carried in tanks on the rover.

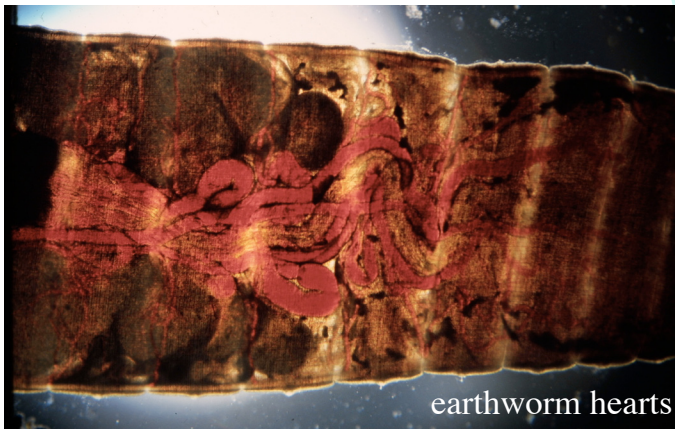
The *Terra Rover* carries equipment for exploration, including tackle for towing and climbing, and diving suits for immersion in fluid environments.

Protecting the rover are armored hull plates made of chemically resistant reinforced glass, in the unlikely event the vehicle is swallowed by some monstrous inhabitant of the terrestrial microcosm.



About the Organisms

Earthworms are welcome inhabitants of yards, gardens, and agricultural fields. They cultivate and process soil, converting organic substances into waste materials to be used by plants.



The earthworm's anatomy clearly shows how they enrich the earth with nutrients. Soil (containing insect eggs and decaying plant parts) is swallowed. Soil is mixed and ground up in an organ called the **gizzard**, then passed down the long **intestine** where **digestion** and absorption take place. Finally, it is eliminated above ground in the form of worm casings. **Worm casings** are extremely rich components of healthy soil and are very good for plants.

The earthworm has a complex **circulatory system**. Surrounding the **esophagus** are **five hearts**. They are the pumps that carry nutrients to all parts of the earthworm's body. Blood flowing through **capillary beds** in the worm's moist skin pick up oxygen and release carbon dioxide. Earthworms are **hermaphroditic** – each is both male and female. **Eggs** are deposited in a cocoon made of secretions produced by the **clitellum** – a ring-like structure obvious on earthworms.



The Log of Captain Jonathan Adler

11:30 hours... Equipped with climbing tackle and lamps, Tara and I descend into the earthworm burrow. A few millimeters below the surface we find the soil to be cool and moist, conditions we believe are ideal for healthy earthworms.

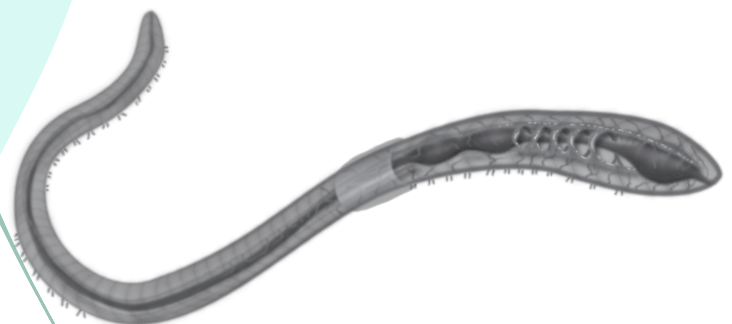
The monster is resting for the moment. It does not breath with lungs - its skin can evidently absorb oxygen from air, which explains why it must remain moist.

Tara suggests that shining one of our lamps through the worm might illuminate the beast to reveal more about its internal organs - and help us locate our rover.

Tara's lamp does the trick! The worm's internal organs are now easily visible. Its red-blood filled circulatory system travels down one side of its body and back again up the otherside. What pumps all of this blood throughout the worm? Tara's light reveals, not one... but five steadily beating hearts!

Running down the center of the earthworm is its digestive tract, where soil is mixed with organic debris such as fallen leaves and insect eggs... and our Terra Rover. Soil is ground by organs into a muddy mixture. The intestine is where nutrients are absorbed before the enriched soil comes out the tail end. And that, we now see, is what makes those mysterious mounds!

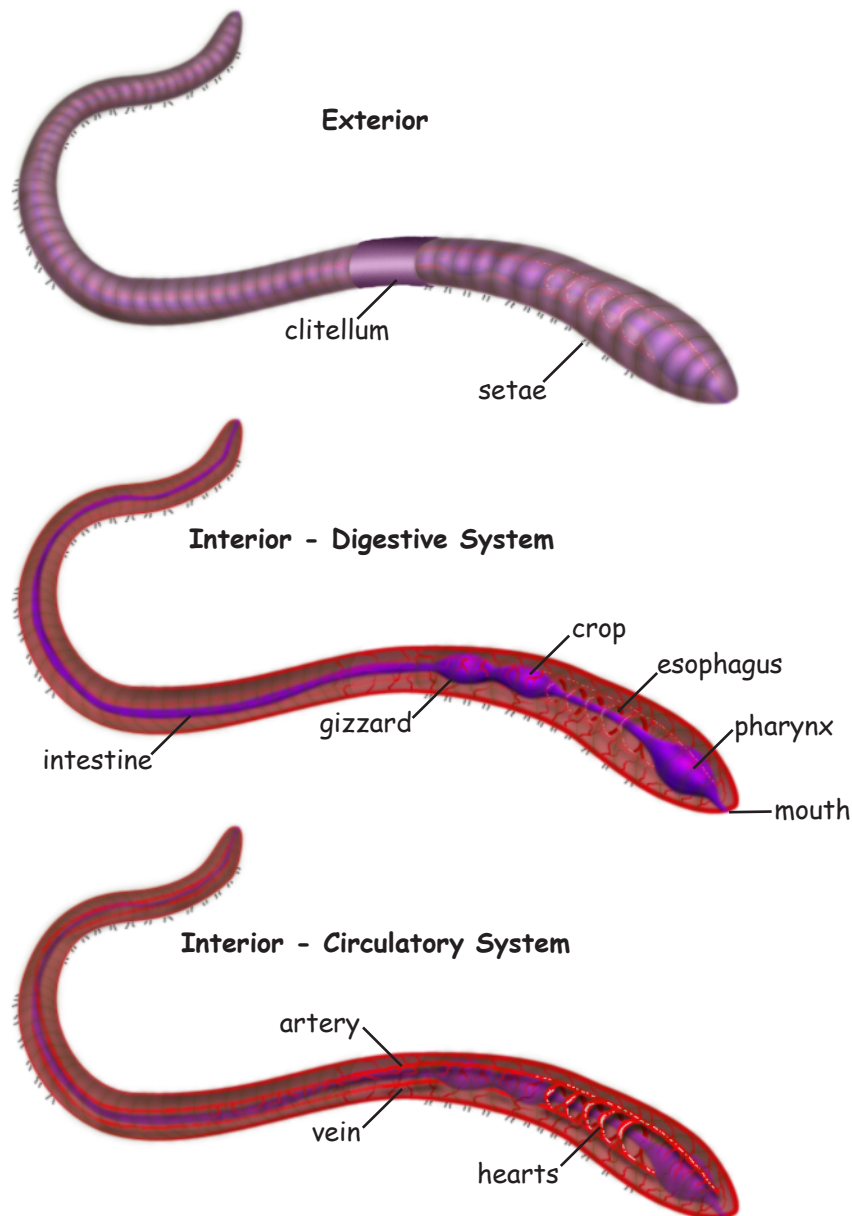
Luckily, it isn't long before the earthworm's efficient digestive system delivers our rover back to the surface, almost where we left it! We bid farewell to the backyard ecosystem and make our way back to the Cyclops.



Key to Organisms

Earthworm

Earthworms are the primary workers for returning nutrients from leaves and organic material back into the soil for use by plants. They make burrows, and use hair-like setae for anchoring and moving through soft humus. Each worm is both female and male. An earthworm's moist skin transfers oxygen to blood capillaries in the circulatory system, and expels carbon dioxide. Like humans, the earthworm's blood is red, based on hemoglobin. But instead of just one, a worm has five hearts that keep blood constantly circulating, moving nutrients and oxygen to all parts of its body.





The Freshwater Adventures Volume, 13 Episodes
Copyright Castle Builders Entertainment 2015

Perilous Plankton
Photosynthetic Fauna
Plagued by a Predator
A Monster in the Shallows
The Bacterium that Came to Dinner
Voyage to the Bottom of the Food Chain
Quick Current Critters
Down the Waterfall
Forest Floor Explore
The Great Termite Kingdom
Province of Plant Prospectors
Lair of the Earthworm
Stromatolite Explorer (Bonus)

www.microscopicmonsters.com

Microscopic Monsters is produced by Castle Builders Entertainment
and is distributed for education by BioMEDIA ASSOCIATES, LLC.
info@ebiomedica.com (877) 661-5355