

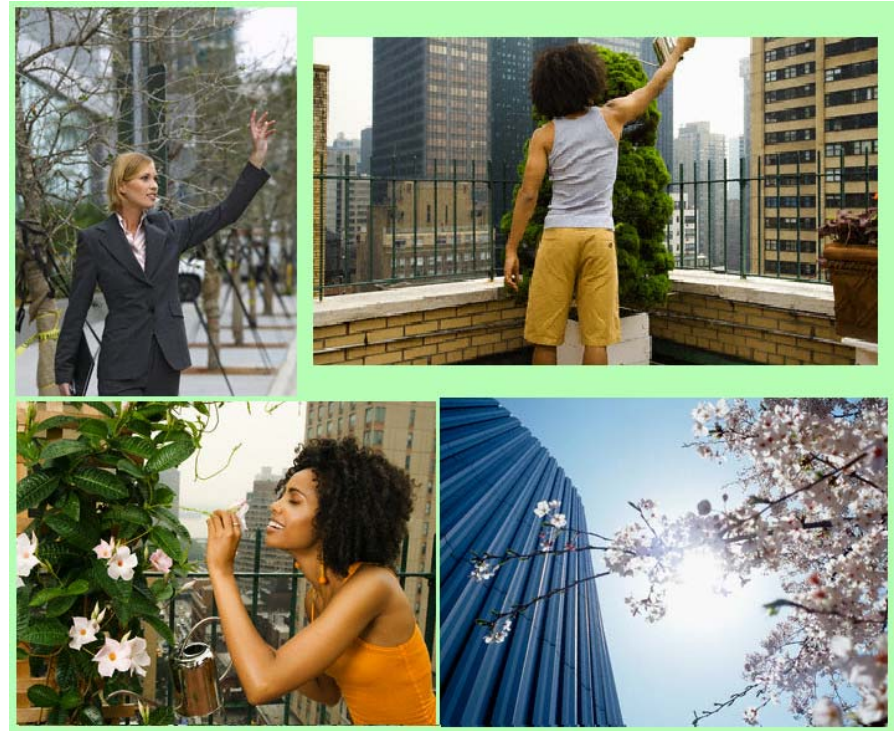
# #11937 NATURE IN THE CITY

FILM IDEAS, INC, 2005  
Grade Level: 2–5  
15 Minutes



## CAPTIONED MEDIA PROGRAM RELATED RESOURCES

- [#11004 ALEX IN NEW YORK](#)
- [#11138 FAMILIES OF RUSSIA](#)
- [#11164 FAMILIES OF PUERTO RICO](#)
- [#11775 FAMILIES OF GHANA](#)
- [#11923 PEOPLE IN THE CITY](#)



*From film ideas, Inc.*

# My Neighborhood, My Community

6-Part SERIES

- **People In The City**
- **Nature In The City**
  
- **People In The Suburbs**
- **Nature In The Suburbs**
  
- **People In The Country**
- **Nature In The Country**



**Film Ideas, Inc.**

308 North Wolf Rd. Wheeling, IL 60090

TEL: 1-800-475-3456 or 847-419-0255

FAX: 847-419-8933 E-MAIL: [filmid@ais.net](mailto:filmid@ais.net)

WEBSITE: [www.filmideas.com](http://www.filmideas.com)

Copyright © 2006

**film ideas, Inc.**

*Presents*

# My Neighborhood, My Community

---

## **Nature In The City**

---



6-Part Series for **kids**

**INSTRUCTIONAL GUIDE**

## INTRODUCTION TO SERIES

Planet Earth is home to billions and billions of people, each one a very different person. But there is one thing we all have in common, almost everybody is part of a community and most of us live in a neighborhood.

This important cross-subject series for young children is aligned to the curriculum and fosters an understanding of what life is like in different types of communities and neighborhoods whether city, suburb or country. Each of the 6 programs features a young narrator who interestingly shares what daily life is like in the neighborhood for people, plants & animals. Each chaptered program includes important concepts of community, diversity, life, resources, and transportation, each carefully focused for early understanding.

As a complementary device with each program, an instructional guide suggests exercises to enhance the learning for teachers, parents and young learners. These interactive exercises will reinforce and further develop a students level of comprehension.

**Permission granted to copy the exercises provided in this guide. For educational use ONLY.**

My Neighborhood,  
My Community  
(6-part series)

### Welcome To:

- People In The City
- Nature In The City
  
- People In The Suburbs
- Nature In The Suburbs
  
- People In The Country
- Nature In The Country

**Chaptered DVD, MPEG or VHS**

**E-Guides Available For Download @:  
[www.filmideas.com](http://www.filmideas.com)**

### Comprehension Questions

- How might nature in the city differ from nature in a suburban or country neighborhood? What animals would be different? What plants would be different?
- Why is it important to have nature as a part of the city neighborhood?
- How do city neighborhoods help improve the quality of life for all members of the community (people, plants, and animals)?
- What plants found in a big city neighborhood would surprise you?
- What animals found in a big city neighborhood would surprise you?

### **NATURE IN THE CITY**

Come along as 8-year-old Lee takes young learners on a fascinating tour of his big city neighborhood to show them how nature (plants, animals, and even weather) are an important and special part of his neighborhood and community. He'll share with youngsters how plants and animals have learned to adapt in his big city neighborhood.

#### Featuring Cross-Curriculum Chapters:

- Neighborhoods & communities: An Introduction.
- How nature changed as the city grew.
- How big city buildings can affect weather.
- How plants and natural areas survive and improve city life.
- How so many different animals can live in the city.

**Now You Know:** We have learned what it is like to live in a city neighborhood with nature all around us. We know that some plants and animals must be cared for by people in the city while others have adapted and care for themselves. We also know that weather can be different in a large city neighborhood because of the many tall buildings. Now that we know, we appreciate that a city neighborhood can be a special place for plants and animals too.

### Assessment of Prior Knowledge

Have you ever visited a big city? What animals did you see? Did any of them surprise you?

How might plants and animals in a city neighborhood differ from your neighborhood. How might they be the same?

### Discussion Questions:

What was the area like for plants and animals before the first settlers arrived in the city ?

Might you find more or different kinds of animals in a big city?

What does it mean when plants and animals adapt to their neighborhood?

Weather can be different in a big city, why?

### Follow Up Activities

Consider a local map and ask students to find the bigger cities by using the map legends or other visual techniques.

Consider a trip to a larger city, if possible, to explore the natural world of the city.

Use the internet or other sources to learn fascinating facts about the natural world in the city.

### VOCABULARY (Key Words)

**Community** - a large group of people who live in the same area and may share similar interests.

**Neighborhood** - a group of people who live very close to one another. Usually a smaller area.

**City** - a large town where many people work, live, and play.

**Adapting** - people, animals and plants learning to adjust to a change in their life or environment.

**Early Settlers** - a group of people who were first to live in a new area.

**Greenspace** - designated land that is kept or maintained in a natural state.